



GAT MONTHLY MEMBERSHIP PROGRESS REPORT

Results as of: 6/30/2021

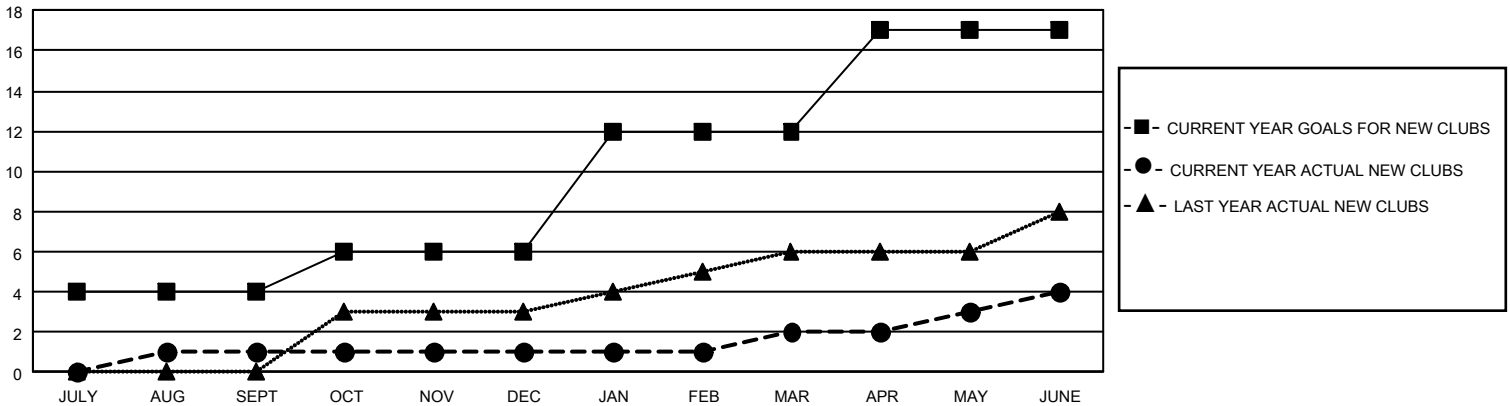
GMT Constitutional Area 1, Group K

REPORT DOES NOT INCLUDE CLUBS IN UNDISTRICTED AREAS.

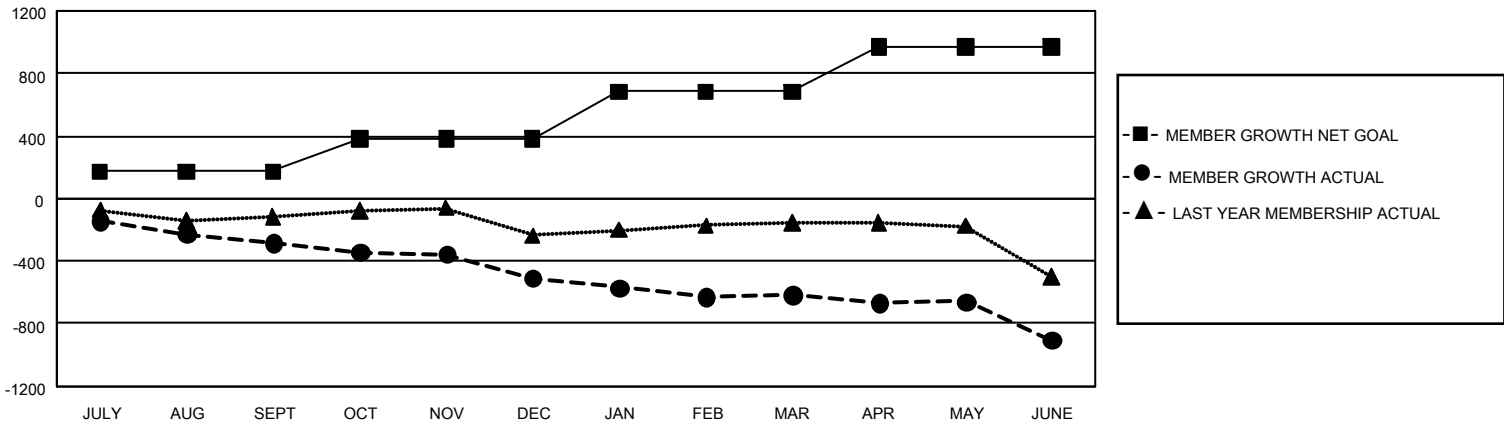
| Clubs | | | |
|-----------------------|---------------|-----------|---------------|
| RESULTS FOR 2020-2021 | | | |
| QUARTER | NEW CLUB GOAL | NEW CLUBS | DROPPED CLUBS |
| JULY/AUG/SEPT | 12 | 1 | 1 |
| OCT/NOV/DEC | 6 | 0 | 1 |
| JAN/FEB/MAR | 18 | 1 | 5 |
| APR/MAY/JUNE | 15 | 2 | 2 |

| Members | | | |
|-----------------------|------------------------|----------------------|--|
| RESULTS FOR 2020-2021 | | | |
| QUARTER | MEMBER GROWTH NET GOAL | MEMBER GROWTH ACTUAL | DROPPED MEMBERS ACTUAL (including transfers) |
| JULY/AUG/SEPT | 173 | 253 | 473 |
| OCT/NOV/DEC | 209 | 288 | 472 |
| JAN/FEB/MAR | 302 | 219 | 307 |
| APR/MAY/JUNE | 288 | 487 | 723 |

GOALS AND ACTUAL NEW CLUBS CUMULATIVE



GOALS AND ACTUAL MEMBERS CUMULATIVE



| | | | |
|---|---|--|------------------------------|
| DROPPED CLUBS: 9 | 292 CLUBS OF 594 ADDED 1 OR MORE NEW MEMBERS | GENDER DISTRIBUTION | |
| | | MALE 10,941 (63.28%) | FEMALE 6,348 (36.72%) |
| DROPPED MEMBERS | | TOTAL FAMILY UNIT MEMBERS 3,394 | |
| DECEASED 339 | CLICK HERE FOR CUMULATIVE MEMBERSHIP DATA | FAMILY MEMBERS PAYING HALF DUES 1,740 | |
| CLUB CANCELLED 61 | | | |
| OTHER 1,577 | | | |
| TOTAL 1,977 | | | |